

Auntie Jam's Gift Shop ふらのジャム園

Kyohsai Farm's Furano Jam Garden is located roughly 20km away from the city center of Furano, Hokkaido, nestled deep in the woods of Rokugoh Village. Since its founding in 1974, Kyohsai Farm has been delivering authentic, wholesome food products to the world.



Customers are free to taste test any one of our 35 kinds of hand-made Furano Jam before deciding which ones to purchase.

Auntie Jam's Factory



After patiently skimming the jam, we carefully draw out the sugar from the condensed flavor of the raw ingredients to make our product. We never use any additives such as preservatives, artificial flavoring, or food coloring. We hope that you will enjoy the authentic flavors shaped by our high quality ingredients grown in the great outdoors and seasoned by the extreme daytime/nighttime temperature differences unique to this valley terrain.

Jam Making Class

In the Jam Making Class we teach the secret to making Auntie's Jam's special recipe. You won't find it in any book! After you finish making your own handmade jam, bottle it, place your own original label on the side, and then take it home with you. Every participant will also receive a "Handmade Jam Graduation Certificate".



- Participation Fee / ¥1000 (tax included)
- Participation Requirements / Junior High School and up (younger children must be accompanied by a parent)
- Time / 10:00 AM and 2:00 PM – held twice daily (approximately one hour sessions)
- Maximum Number of Participants / 40
- Reservations taken up until the day before (large group negotiable)

For participants making a reservation on the telephone, we only offer the two time slots mentioned above. If there are too few participants, you may sign up the day of at the Jam Factory. Those wishing to participate the same day should call ahead for further information.

TEL.0167-29-2233



Furano Jam Garden

Explore an array of jams homemade with a meticulous attention to natural ingredients and recipes. The Café Corner, serving such delights as jam-topped ice cream, is a must-visit!



Anpanman Shop

Ours is the only shop in the country directly operated by Takashi Yanase, author of Anpanman. The Playroom and Gallery are here for both children and adults to enjoy.



Rokugoh Viewing Platform

A viewing platform perched 500 meters above sea level offers a sweeping view of the Rokugoh region framed by the majestic Daisetsuzan Mountain Range. These mountains served as the backdrop for the famous drama *Kita no Kuni Kara*.

Operating Hours

Summer Season

April 21st → November 23rd
Operating Hours / 9:00 AM → 5:30 PM
7 days / week



November 24th → April 20th
Operating Hours / 9:00 AM → 5:30 PM
Anpanman Shop → Closed on Mondays

(In case of a holiday, closed on Tuesdays)

Jam Shop closed for winter (December and January)
Opens again in February, closed on Tuesdays



Winter Season

Closed for the New Year Season. For further information, please visit the website.

Entrance to the Garden and Gallery ▶ Free



ふらのジャム園 (有) 共済農場

Auntie Jam's Gift Shop Kyohsai Farm Co., Ltd.

076-0162 Hokkaido, Furano City, 3 Higashirokugo
(around 30 minutes by car from the Furano JR Train Station)

TEL.0167-29-2233 ● FAX.0167-29-2650
(Anpanman Shop Hotline ▶ TEL.0167-29-2235)

✉ f-rokugou@furanojam.com

Check out all the latest information here!

Furano Jam Garden Official Site
<http://furanojam.com/>
(PC/mobile site versions available)

Loaded with information on lavender field conditions, traffic reports, and places of interest!



ふらのジャム園 Furano Jam Garden

Takashi Yanase Shop
Anpanman Shop



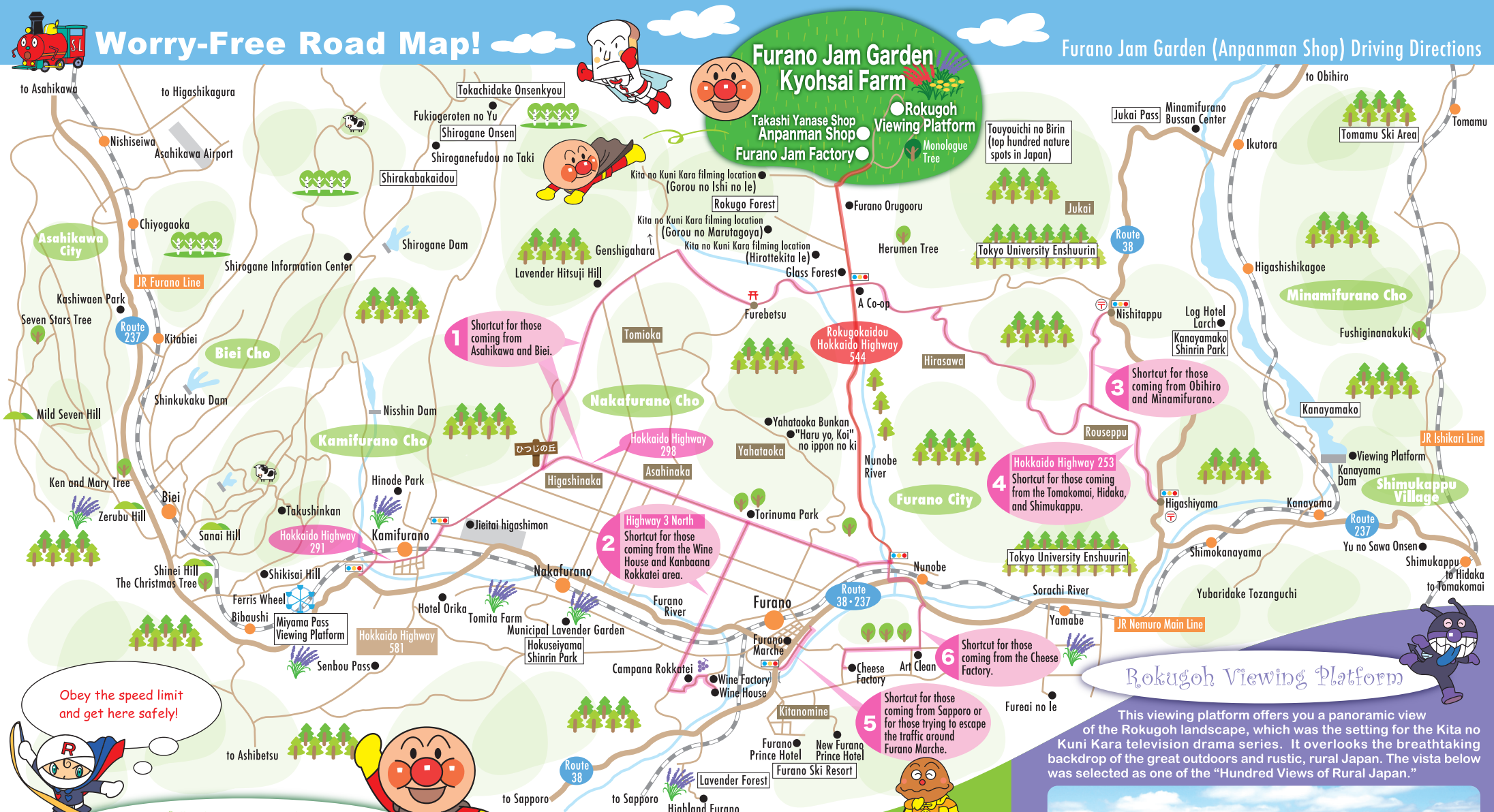
ふらのジャム園 (有) 共済農場

English



Worry-Free Road Map!

Furano Jam Garden (Anpanman Shop) Driving Directions



Takashi Yanase Shop ANPANMAN Shop



[Shopping]

This shop is practically bursting at the seams with Anpanman Merchandise! They deal in everything from popular items to art prints signed by Mr. Takashi Yanase himself. Each item is of the highest quality available.



[Gallery]

The Gallery has 111 items on display, where you will find everything from extremely rare works by Takashi Yanase to animation cells from the Anpanman series. You do not have to be an Anpanman fan to find this art space inspiring.

Have fun drawing your own pictures at the gallery!



Rokugoh Viewing Platform

This viewing platform offers you a panoramic view of the Rokugoh landscape, which was the setting for the Kita no Kuni Kara television drama series. It overlooks the breathtaking backdrop of the great outdoors and rustic, rural Japan. The vista below was selected as one of the "Hundred Views of Rural Japan."



Irodori no Hiroba – Painted Plaza
Surrounding the viewing platform are fields of flowers where lavender, poppies, sunflowers, Chinese peonies, mustard flowers, cosmos and other blossoms unfold into a tapestry of color in time with the changing of the seasons.